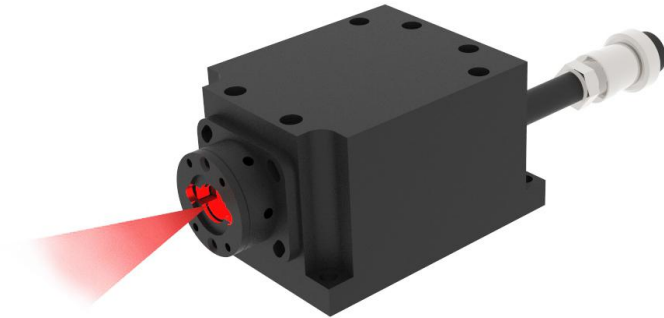


OEM-MF Series Line Laser



OEM-MF Series Line Laser

The laser is made features of high power, high straightness, perfect line uniformity and high stability to adapt to various environments.

The user can choose from IR, red, green, blue, violet or UV wavelengths depending on the application and material to be inspected.

OEM-MF Series Line Laser with its stable performance, high reliability works professionally in road detection, railway detection, tunnel and high-speed rail detection, etc.

FEATURES

- Output power up to 15W
- Wavelengths from 375 to 1550nm
- TTL modulation up to 30kHz
- Analog modulation up to 30kHz

APPLICATIONS

- Road detection
- Railway detection
- Tunnel detection
- High-speed rail detection



SYSTEM SPECIFICATION*

Wavelength (nm)	375	405	488	450	520	640	655	750	785	808	830	852	915	940	980	1060	1470	1550
Wavelength tolerance (nm, typical)	±5	±5	±5	±5	±10	±5	±10	±5	±10	±5	±10	±10	±5	±5	±10	±5	±10	±20
Max. power (W)	0.3	1	0.4	3.5	0.8	1	1	5	2.5	10	2	1.5	15	4.5	12	5	3.5	3.5
Power stability (rms, over 4hours)	<1%, <2%, <3%																	
Line angle	5°, 7°, 10°, 15°, 30°, 45°, 50°, 60°, 75°, 90°, 100° (Other angles are available upon request)																	
Laser operation mode	CW																	
Luminance uniformity	80%																	
Straightness error	Less than 0.5%																	
85% peak power proportion in corss-section	95%																	
Temperature & power stability	Less than 0.5%																	
Expected lifetime hours	10,000																	

ELECTRICAL SPECIFICATIONS

Power supply	PSU-H-LED	PSU-H-FDA	PSU-H-OEM
Input voltage	100-240V AC	100-240V AC	12V DC
Modulation	TTL modulation Analog modulation		
Modulation frequency kHz	TTL up to 30 Analog up to 30		

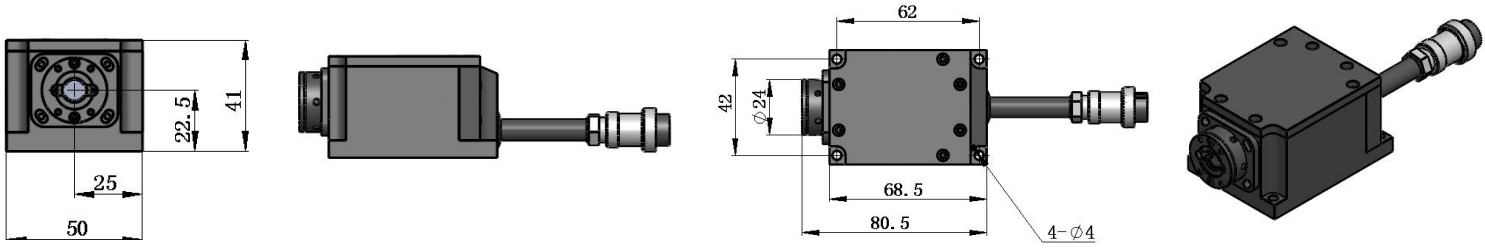
ENVIRONMENTAL CONDITIONS

Operating temperature °C	10°C to 35°C
Storage temperature °C	-20 °C to +80 °C
Humidity %	< 90 %, non-condensing

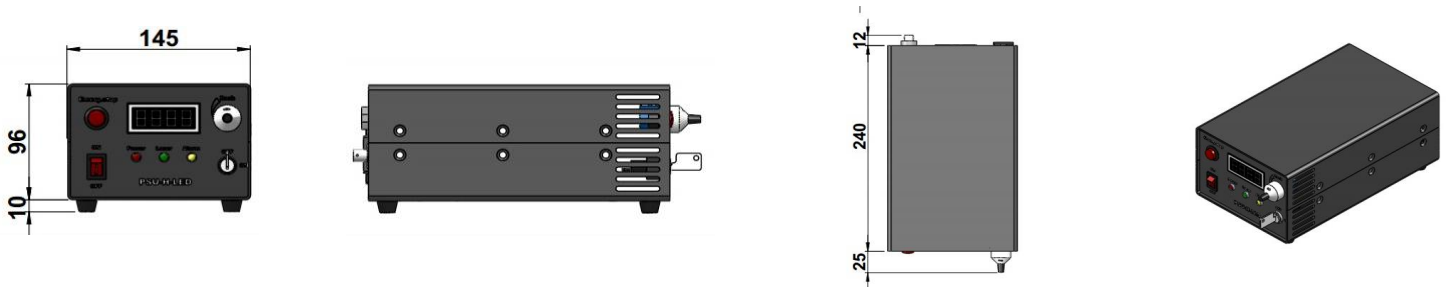
MECHANICAL SPECIFICATIONS

Dimensions of laser head mm	80.5 x 50 x 41		
Dimensions of power supply mm	PSU-H-LED	PSU-H-FDA	PSU-H-OEM
	277 x 145 x 106	275 x 145 x 104	171 x 100 x 40
Material	Aluminum		

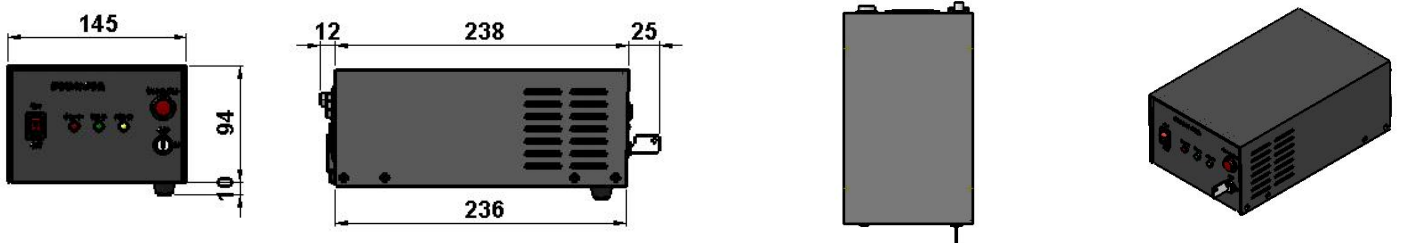
DIMENSIONS OF LASER HEAD (mm):



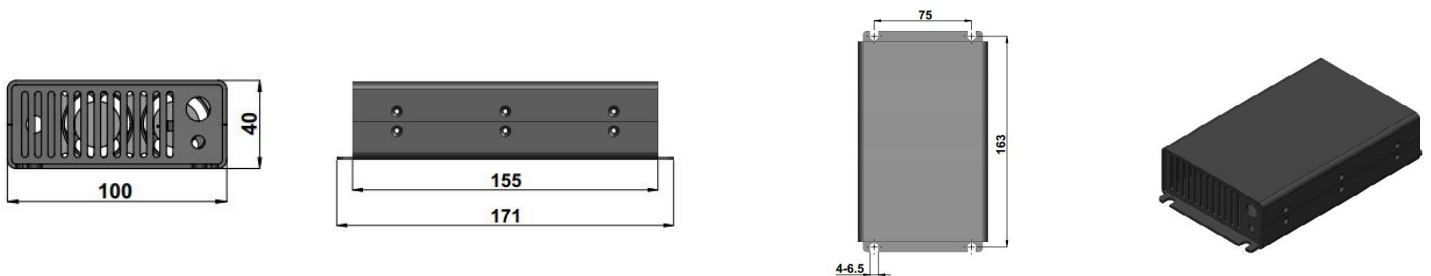
DIMENSIONS OF POWER SUPPLY FOR PSU-H-LED (mm):



DIMENSIONS OF POWER SUPPLY FOR PSU-H-FDA (mm):



DIMENSIONS OF POWER SUPPLY FOR PSU-H-OEM (mm):





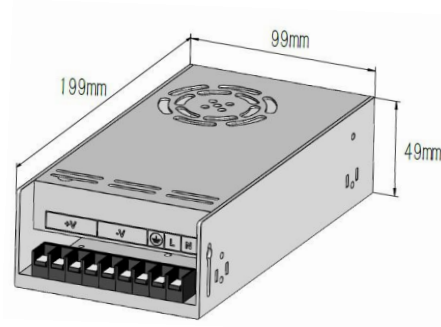
中国长春新产业光电技术有限公司
Changchun New Industries Optoelectronics Tech. Co., Ltd

Accessories

POWER ADAPTER FOR PSU-H-OEM

Input		100-240V AC 50-60Hz
Output		DC 12V 25A
Adapter size	mm	199 x 99 x 49mm

Dimensions of power adapter (mm):



The Power Supply with CE-marked provide a well-regulated 12VDC. This autoranging power module can be connected to any 100-240 VAC 50-60Hz supply.