



# TrueChrome AF

HDMI Autofocus Color Microscope Camera

Built-in mouse control for autofocus and image measurement operations

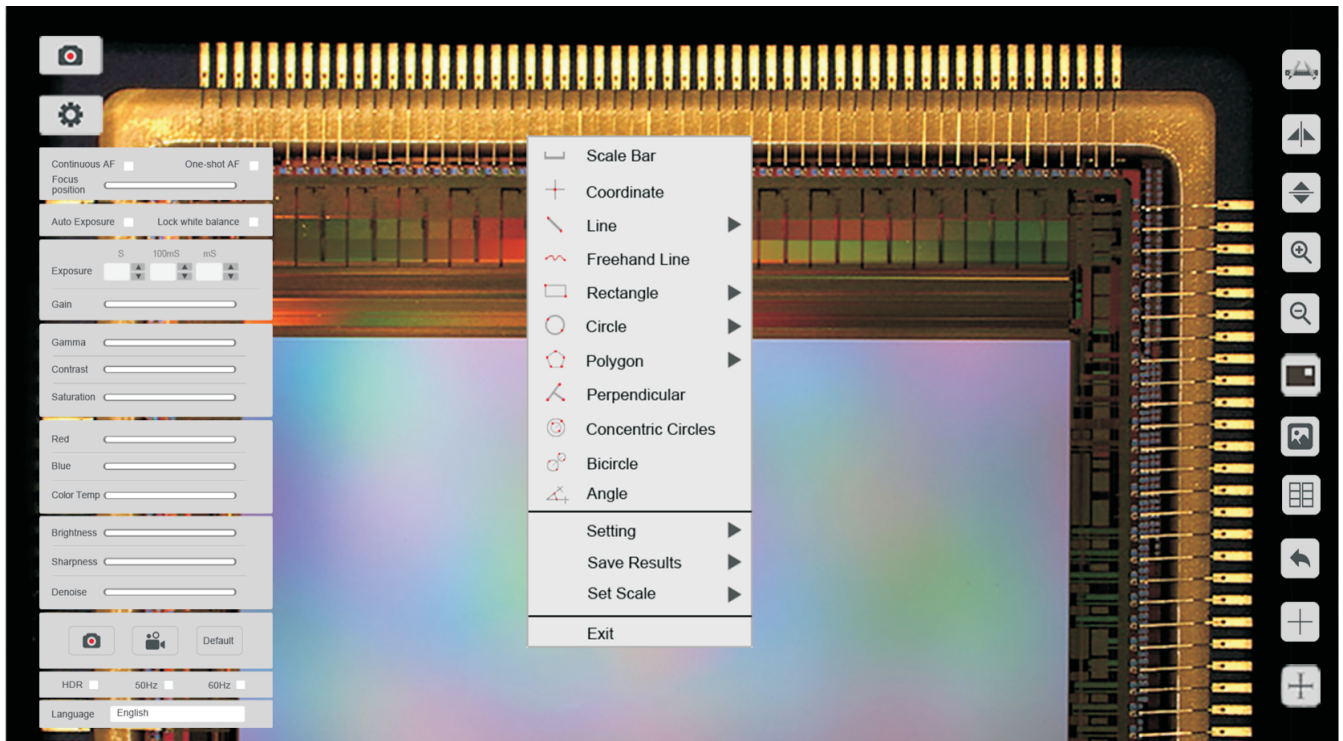
Compatible with Mosaic V2.1 Computational Imaging Software

**TUCSEN**

ISO9001 CE  RoHS

[www.tucsen.com](http://www.tucsen.com)

# Built-in mouse control for autofocus and image measurement operations



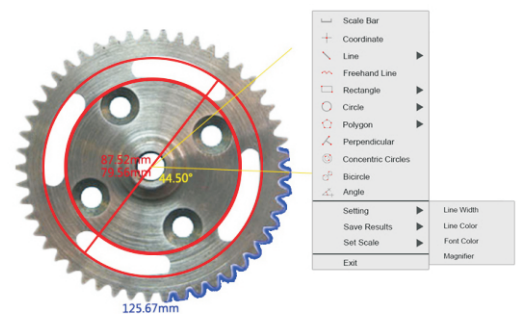
## ○ An unprecedented high-speed focusing experience

TrueChrome AF offers both continuous and single-shot autofocus modes. It also supports mouse wheel control for fine-tuning. Data transfer up to 60 frames per second enables users to get clear images with ease.



## ○ Professional digital image measurement system

TrueChrome AF provides extremely powerful measurement functionalities including, freehand line, rectangle, polygon, circle, bicircle, angle, point-line distance and much more. Three different length units of millimeter, centimeter, and micrometer are provided to meet various measurement requirements in different applications.

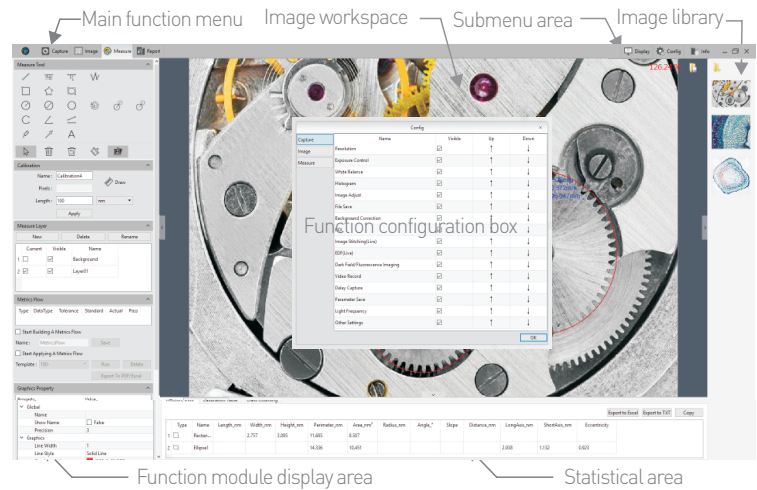


# Revolutionary PC computing imaging software Mosaic V2.1

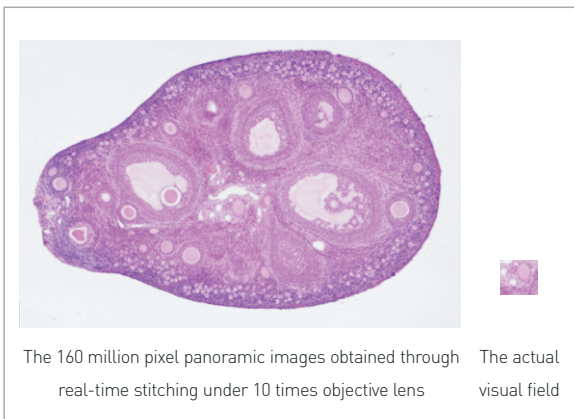
Fast, efficient and worry-free is the core design concept of Mosaic V2.1 software. It adopts a new image "shooting-processing-measurement-reporting" function, modular design, and integrates various intelligent image processing algorithms from Tucsen. It is dedicated to providing users with more simple operation modes and improve work efficiency in all circumstances.

## ○ Custom function module

- ① Autofocus and fine-tuning operations
- ② Intelligent image capture and processing
- ③ Efficient measurement and attribute editing
- ④ Reports are automatically created and modified

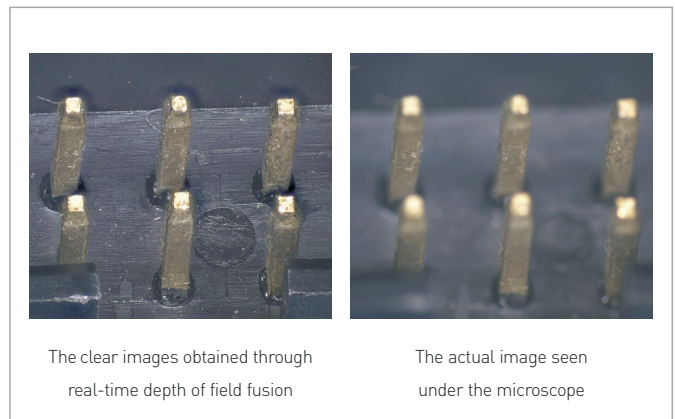


## ○ Real-time image stitching



It can generate large-sized mosaic images in a few seconds while moving the stage, which is light, smooth and worry-free!

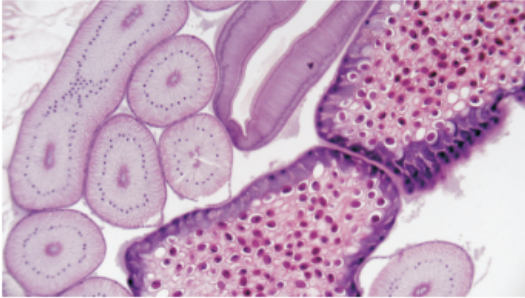
## ○ Real-time depth-of-field fusion



Turning the focus ring to capture different depth of field points while generating clear depth of field images, fast, accurate and efficient.

## The continuation of the TrueChrome

---



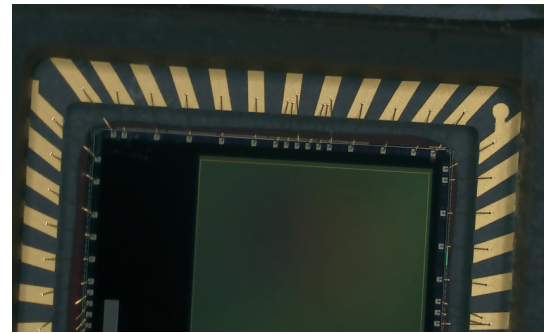
- Perfect color reproduction

TUCSEN's color processing is capable of a new level of precision, matches the monitor image to the eyepiece view, produces extremely-high color definition.

---

- Fastest USB2.0 camera with 30 fps

With 30fps data transfer at an uncompressed resolution of 1920X1080, TrueChrome AF sets a precedent. Make it one of the fastest USB2.0 camera in the world.



- Tailored 1080P HD screen

In order to let users better feel the excellent quality of the Tucsen cameras, we specially customized a 1080P high definition display screen - Retina Screen, which perfectly matches the performance of TrueChrome camera.

Note: Retina Screen is an optional accessory that users can choose to use.

---

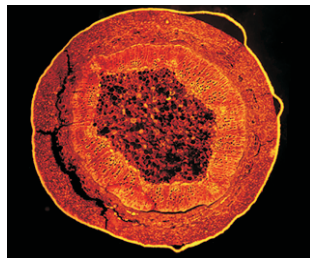
# Copyright >>

Tucsen is an authorized dopter of the international organization HDMI associate. We are the legal supplier of HDMI scientific cameras which represents the best stability and compatibility of Tucsen HDMI scientific cameras.



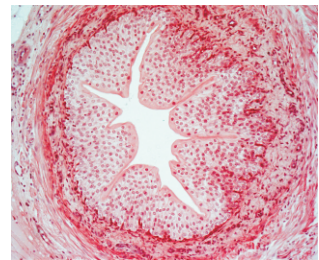
# Sample >> Applications

Fluorescence microscope



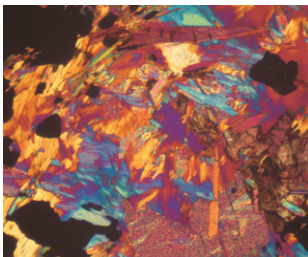
Plant stem section, 10X

Biological microscope



Blood vessel, 20X

Polarizing microscope



Rock section, 20X

Metallographic microscope



PCB board, 5X

Stereoscopic microscope



Screw hole, 4.5X

## Camera specification

Sensor	CMOS	Sensor Size	1/2.8"
Dynamic Resolution	2MP, 1920x1080	Static Resolution	6MP, 3264x1836
Frame Rate	60fps @HDMI 30fps @USB2.0	Video Recording	30fps @SD Card 30fps @PC
Exposure Mode	Auto/Manual	Exposure Time	0.001s-10s
Output Interface	USB2.0,SD Card, HDMI	Setting	Gamma,Gain, WDR Noise Reduction,
White Balance	Auto/Manual	Optical Port	Standard C-Mount
Built-in Software	Cloud 1.0 Ver	PC Software	Mosaic V2.1
Size	90.7x78x70.8(mm)	Weight	452(g)
Compatible OS	Windows 7/8/10 (Real-time image stitching needs to run on a 64-bit system)		

## Retina Screen Features

Resolution	1080P(1920x1080)	Display Type	IPS-Pro
Screen Size	11.6"	Aspect Ratio	16:09
Brightness	320cd/m2	Static Contrast Ratio	1000:01:00
HDMI Port	1	Power Supply Type	12V, 2A
Size	282.0x180.5x15.3(mm)	Weight	600(g)

## Tucsen Photonics Co., Ltd.

Add: 5# Wanwushe Smart Industrial Park , No.2 Yangqi Branch Rd, Gaishan Town, Cangshan Area, Fuzhou, Fujian,PRC

Tel: +86-591-28055080

Web: [www.tucsen.com](http://www.tucsen.com)

E-mail: [support@tucsen.com](mailto:support@tucsen.com)

## PC software features

Modular function configuration
Intelligent 12-bit ISP color reproduction
Real-time depth of field fusion
Real-time image stitching
Real-time fluorescence image synthesis and editing
HDR image synthesis
Micro-imaging-based intelligent automatic exposure
Intelligent flat field correction based on dynamic calculation
Smart measurement workflow
Implements multiple iterations of workflow execution
Supports single shot, delayed camera
Automatic video and delay video generation
Output format selection
User parameter group save and load
Dynamic \ static measurement
Layered measurement
Customize measuring gauges, layers, precision
Customize image naming, style, save location
Implements drawing: points, lines, rectangles, polygons, circles, arcs, angles
Data export as TXT or Excel
Report generation and printing

